

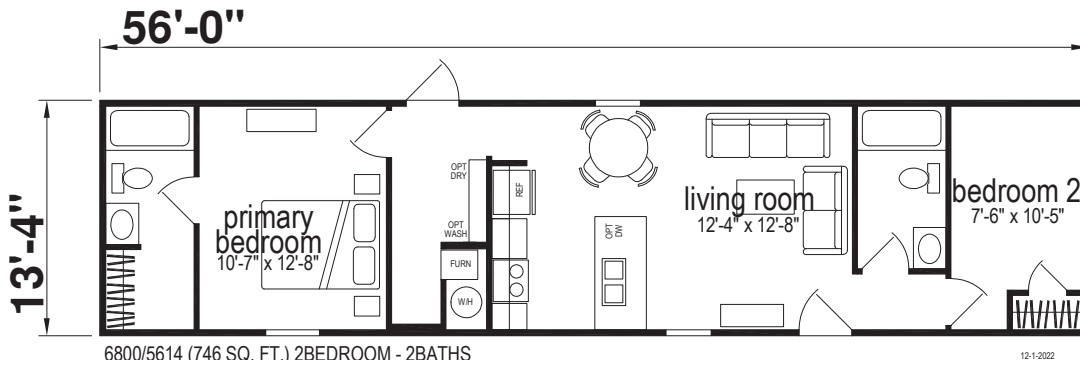
# LAKE MANOR SERIES



**SKYLINE**®

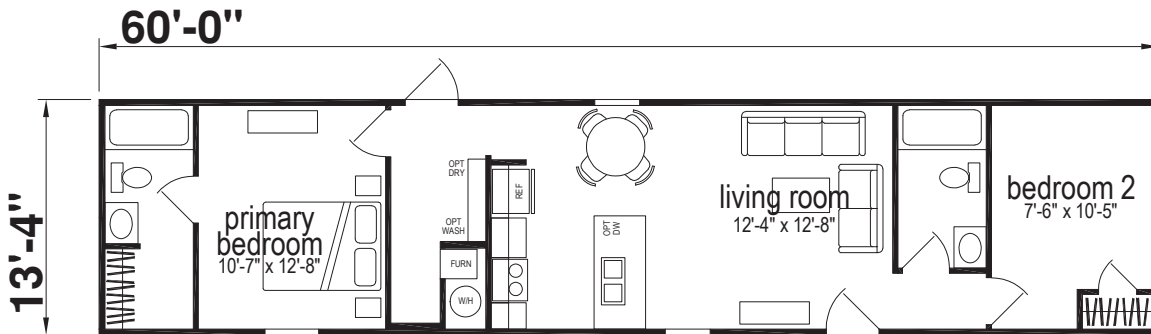
# 6800

Two Bedroom | Two Bathroom | 746 Sq. Ft.



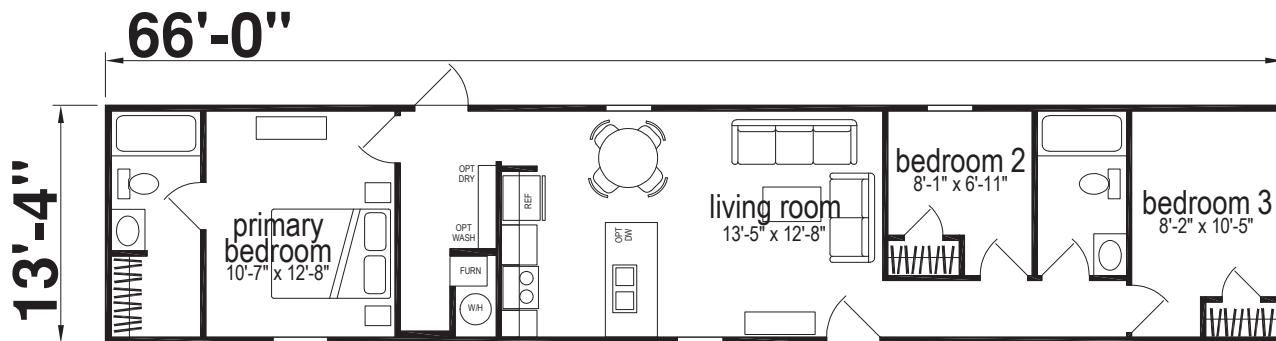
# 6801

Two Bedroom | Two Bathroom | 800 Sq. Ft.



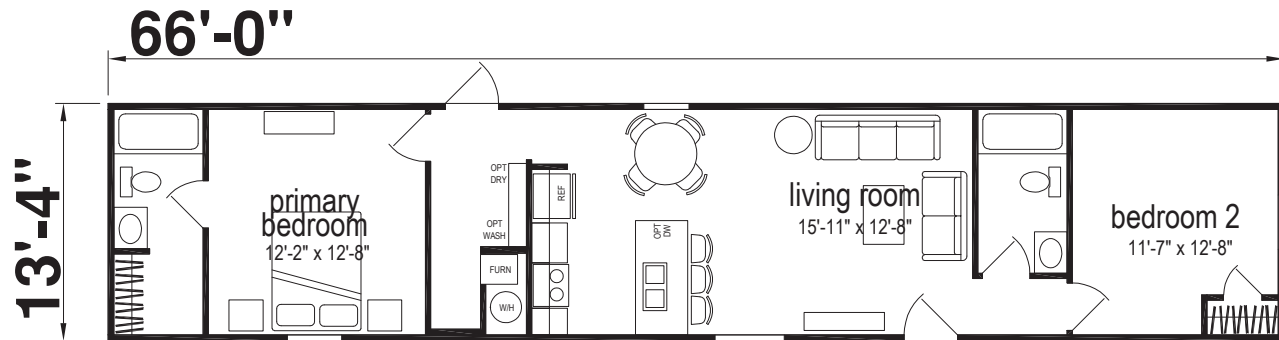
# 6802

Three Bedroom | Two Bathroom | 880 Sq. Ft.



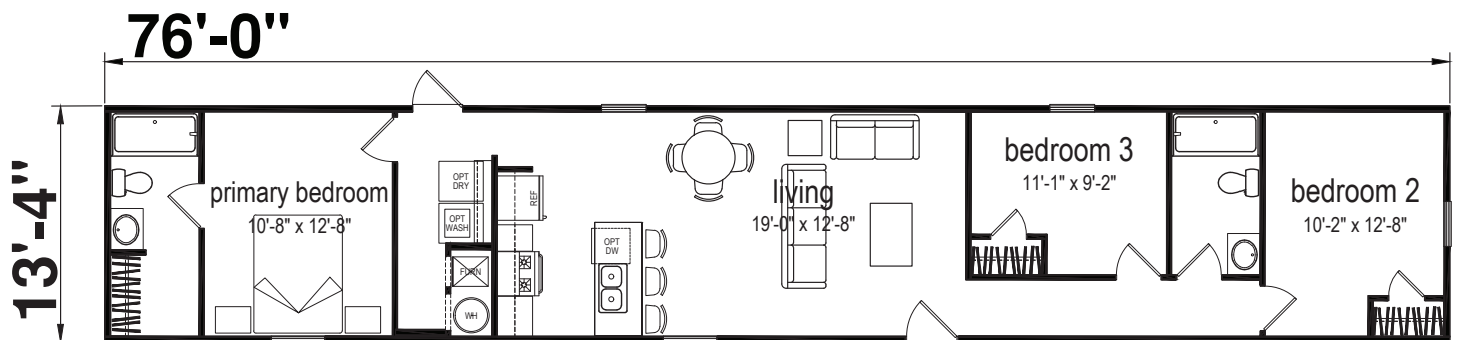
6803

Two Bedroom | Two Bathroom | 880 Sq. Ft.



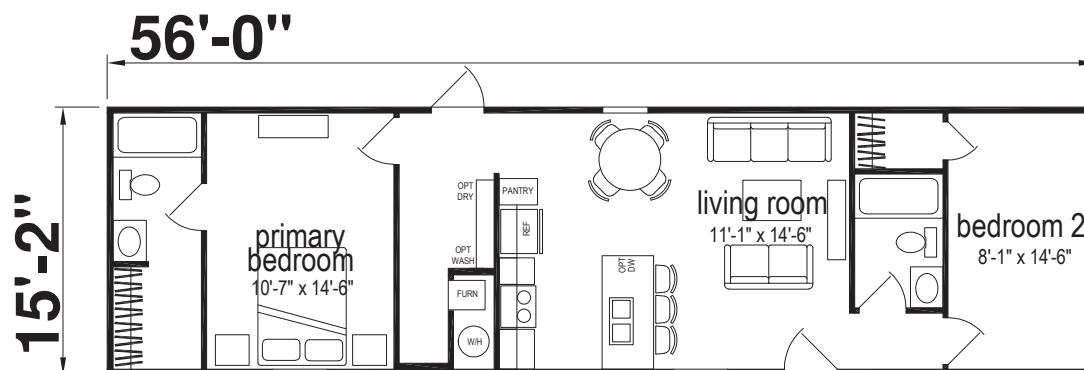
6805

Two Bedroom | Two Bathroom | 1,013 Sq. Ft.



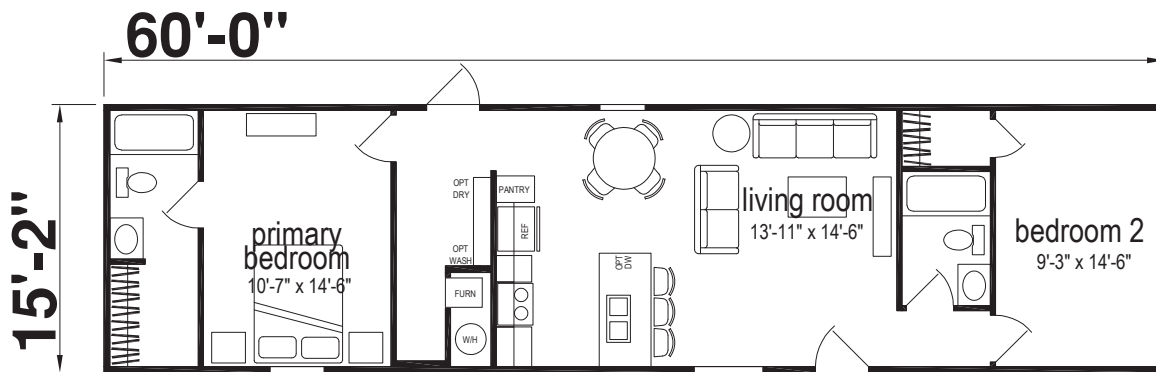
6900

Two Bedroom | Two Bathroom | 849 Sq. Ft.



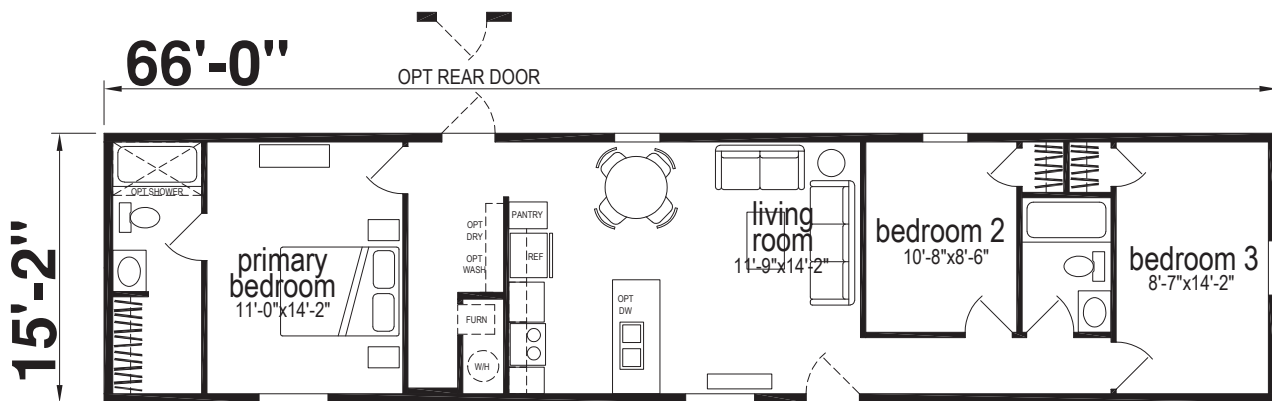
6901

Two Bedroom | Two Bathroom | 910 Sq. Ft.



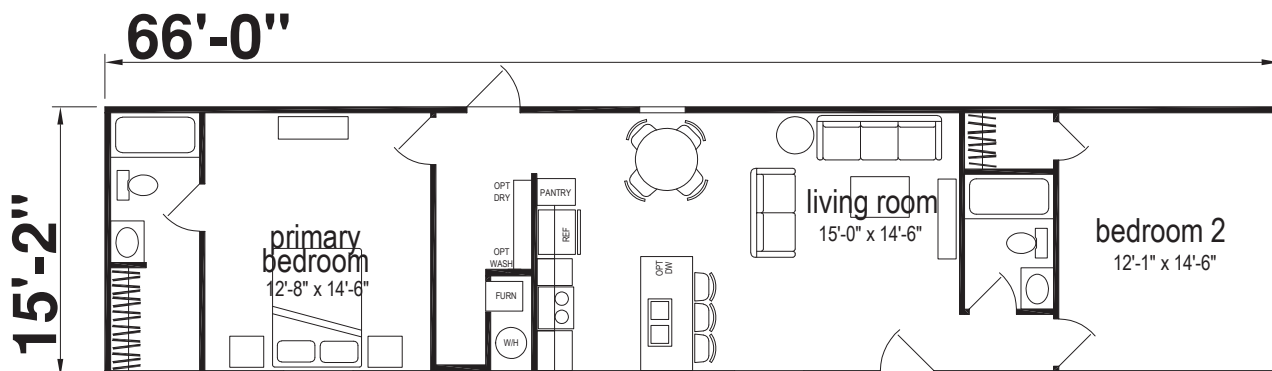
6902

Three Bedroom | Two Bathroom | 1,001 Sq. Ft.



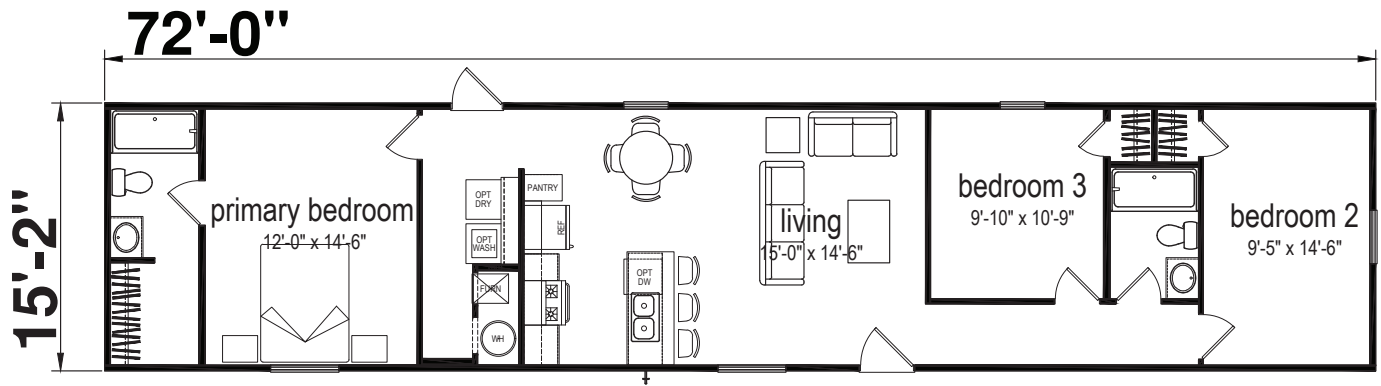
6903

Two Bedroom | Two Bathroom | 1,001 Sq. Ft.



# 6904

Three Bedroom | Two Bathroom | 1,092 Sq. Ft.



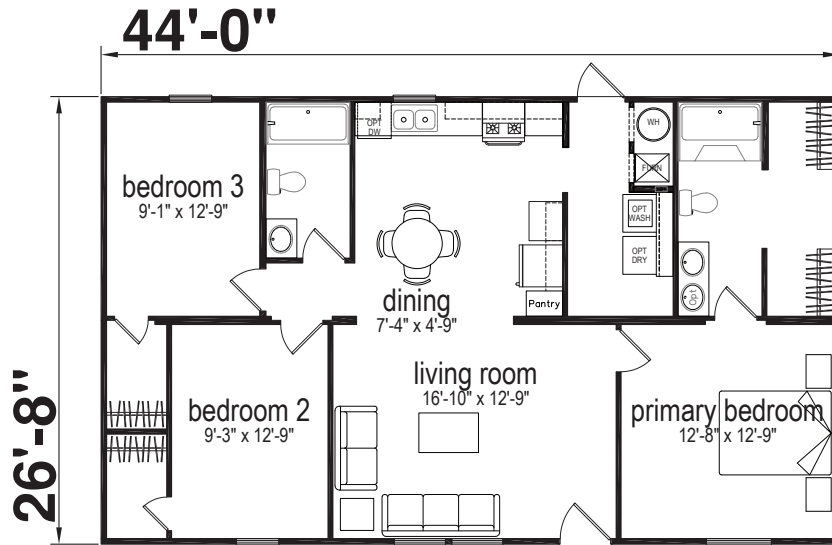
# 6905

Three Bedroom | Two Bathroom | 1,152 Sq. Ft.



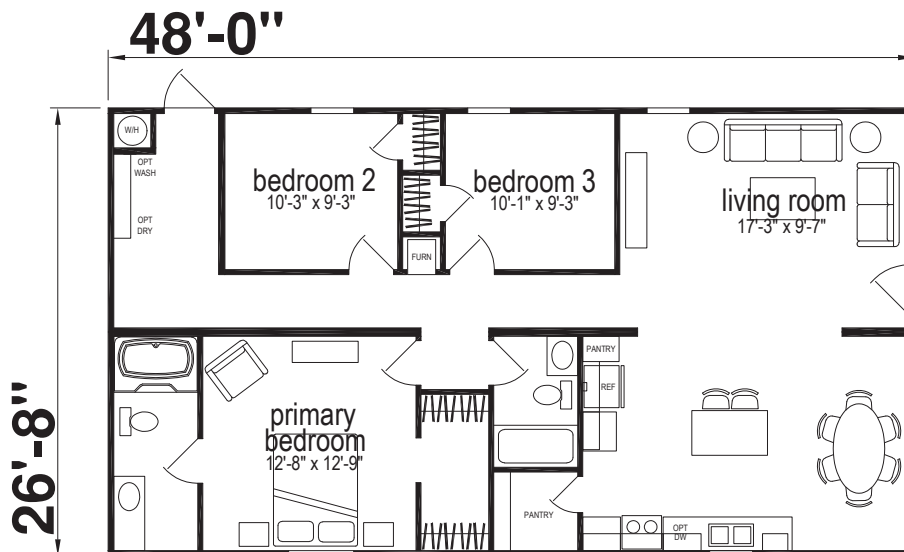
# 3905

Three Bedroom | Two Bathroom | 1,173 Sq. Ft.



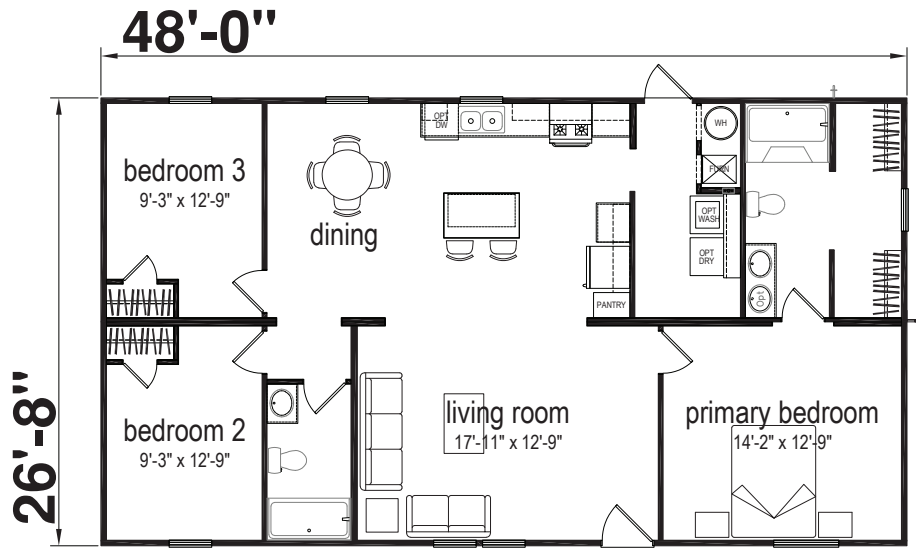
# 3903

Three Bedroom | Two Bathroom | 1,280 Sq. Ft.



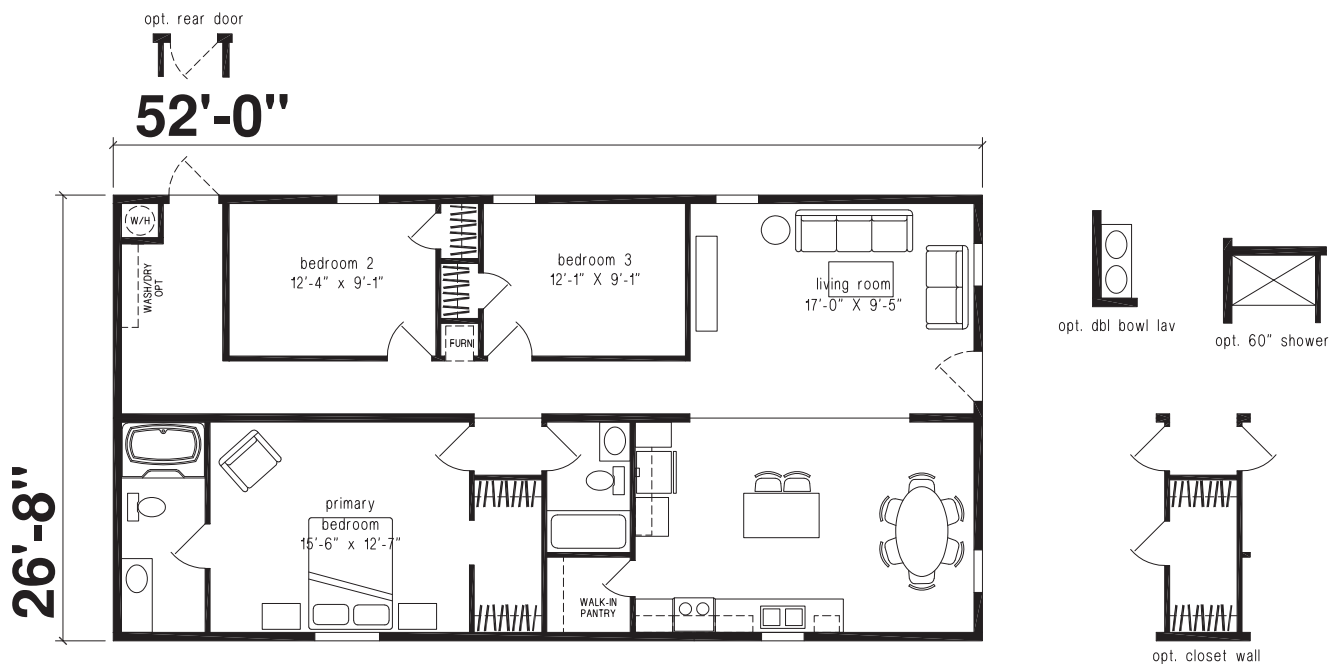
# 3906

Three Bedroom | Two Bathroom | 1,280 Sq. Ft.



# 3904

Three Bedroom | Two Bathroom | 1,386 Sq. Ft.



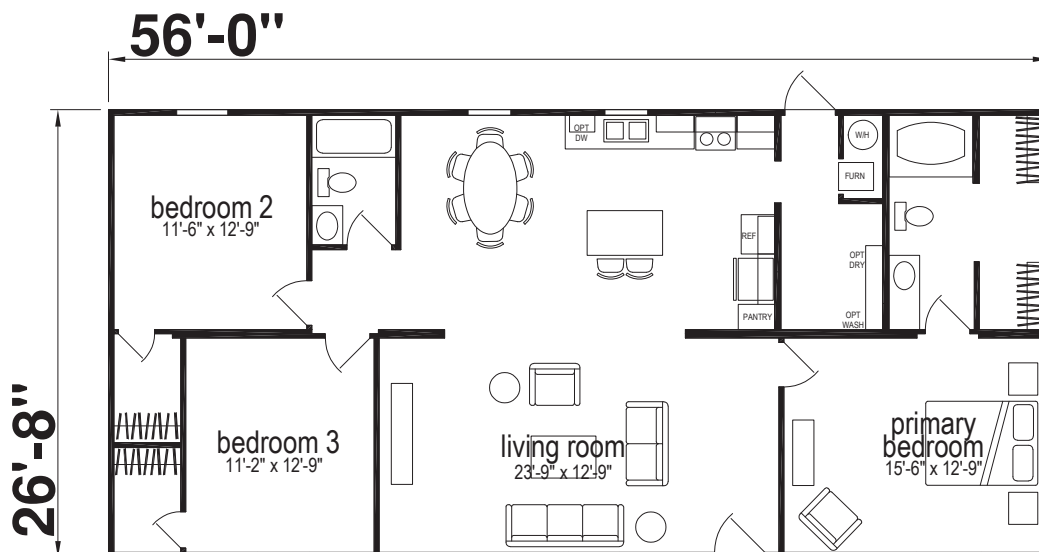
3907

Three Bedroom | Two Bathroom | 1,386 Sq. Ft.



3900

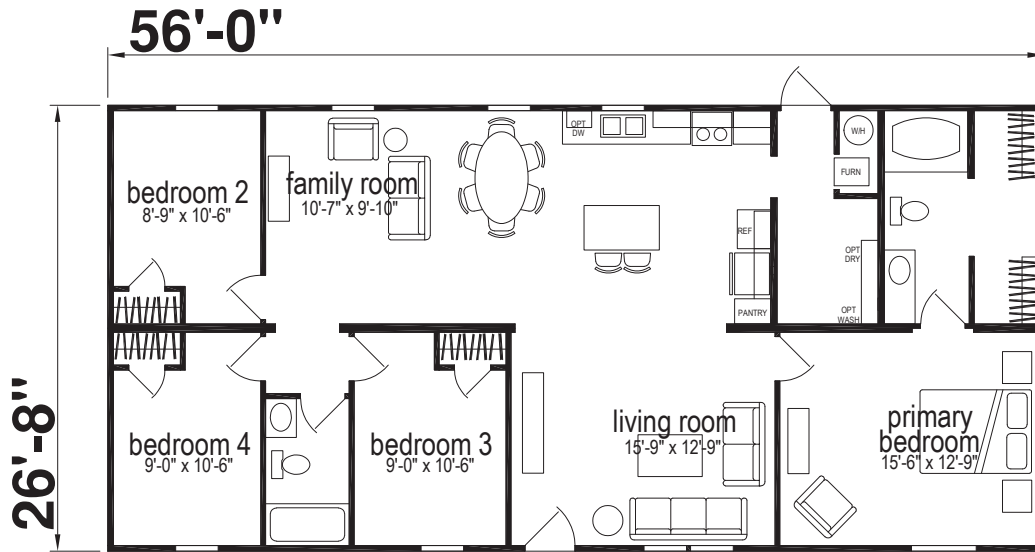
Three Bedroom | Two Bathroom | 1,493 Sq. Ft.





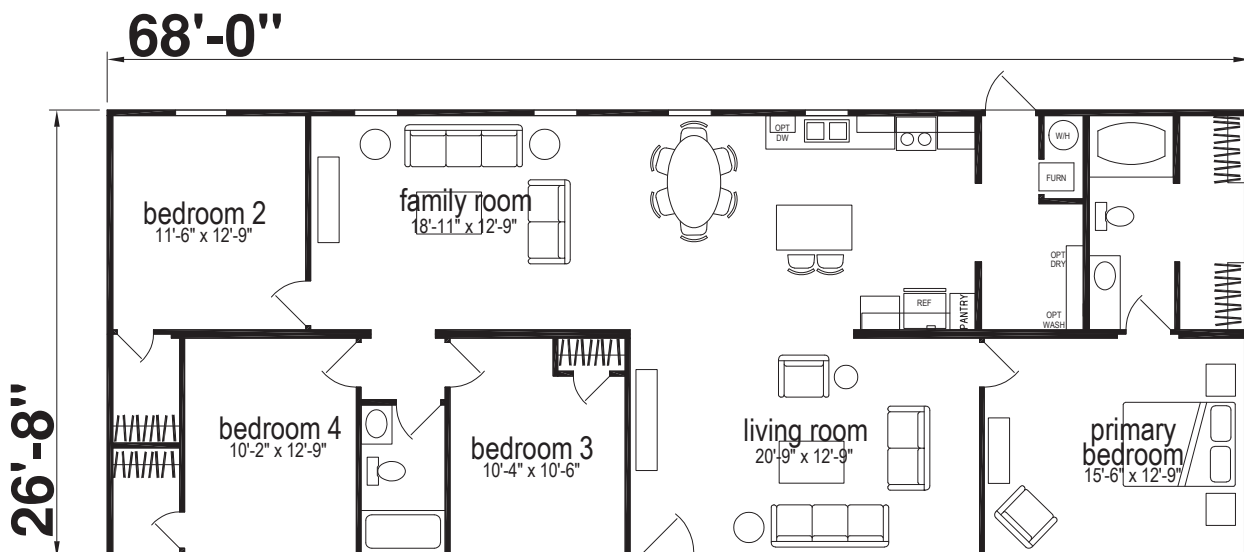
# 3901

Four Bedroom | Two Bathroom | 1,493 Sq. Ft.



# 3902

Four Bedroom | Two Bathroom | 1,813 Sq. Ft.





# STANDARD FEATURES

## CONSTRUCTION

- Wind Zone 1
- 24" O.C. Rafters
- R-33 Roof Insulation
- 20 lb. Roof Load
- 19/32" Tongue and Groove OSB Floor Decking
- R-11 Floor Insulation
- 2x6 19.2" O.C. Floor Joist
- 2x4 Exterior Walls 16" O.C.
- R-13 Wall Insulation
- 8' Sidewall w/ Flat Ceiling
- 2x3 Marriage Walls
- Stipple Ceilings Throughout
- Removable Hitch

## EXTERIOR

- Ridge Cap Ventilation
- 3-Tab Shingles
- Shutters Door Side
- Vinyl Lap Siding
- Metal Fascia & Soffit
- 25-Year Shingles
- Inswing 6-Panel Steel Combo Front Door w/ Storm - 36"x80"
- 9-Lite Inswing Rear Combo Door - 32x80
- White Vinyl Low-E Insulated Windows
- Windows (No Grids)

## INTERIOR

- Décor Vinyl-On Gypsum Panel Throughout
- Round Cabinet Knobs Throughout
- 2-Panel Interior Doors
- Wall Doorstops
- Woodgrain Lino Throughout w/ Matching Transition Strip
- Ventilated Shelving in Closets
- Laminate Backsplash Bath & Kitchen
- White or Gray Lined Kitchen & Bath Cabinets
- Birch Drawer Boxes w/ Epoxy Roller Guides
- 1/2" White Shelving in Overhead Cabinets
- White or Gray Laminate Vacuum-Sealed Cabinet Doors
- 3/4" Face Frames w/ Hidden Hinges
- 30" Upper Cabinets

## HEATING & PLUMBING

- In-Floor Metal Ducts
- Electric Furnace
- 40-Gallon Electric Water Heater
- Whole House Shutoff
- Exterior Faucet
- Plumbing for Ice Maker
- Shutoff at all Cold & Hot Water Lines

## ELECTRICAL

- GFI in Kitchen
- 200 Amp Main Panel
- (1) Exterior Receptacle Rear or Front Sidewall
- 2" PVC Conduit
- Smoke Detector Per Code
- LED Can Lights Per Print
- Exterior Light at Each Door

## KITCHEN

- 6" Stainless Steel Sink
- Counter Height Island
- LED Lighting
- Metal Faucet
- Shelf Above Refrigerator
- 4-Drawer Bank Cabinet

## APPLIANCES

- 30" Stainless Steel Electric Range
- 30" Vented Range Hood
- 18 Cu.Ft. Stainless Steel Refrigerator

## PRIMARY BATH

- Ceramic Lav. Sink
- 42x36 Mirror at Vanity
- Metal 2-Handle Faucet and Shower Diverter
- 1-Piece 35"x60" Fiberglass Shower w/o Door (DW)
- 1-Piece 30"x54" Fiberglass Shower w/o Door (SW)
- Round Bowl Water Saver Toilet

## HALL BATH

- Metal-2 Handle Faucet & Shower Diverter
- Mirror at Vanity
- Ceramic Sink
- 1-Piece 54" Fiberglass Tub/Shower w/o Door

## WARRANTY

- One (1) Full Year Warranty

The logo for SKYLINE features the word "SKYLINE" in a bold, blue, sans-serif font. The letter "Y" is stylized with a white outline. A horizontal blue line runs beneath the letters "L", "I", "N", and "E". A registered trademark symbol (®) is located to the right of the line.

Due to continuous product development and improvement, prices, specifications, and materials are subject to change without notice or obligation.

# SKYLINE

99 Horseshoe Rd, Leola, PA 17540

[skylinehomes.com](https://skylinehomes.com)

